

# AHD CCTV Camera



## ZOOMING with HD CLARITY

2.0 MP



**AX333**  
 IR Bullet Camera  
 AHD & TVI Output  
 Analog Output (Optional)

1080P  
FULL HD



**AX233**  
 IR Dome Camera  
 AHD & TVI Output  
 Analog Output (Optional)

1.3 MP



**AX600**  
 IR Bullet Camera  
 Varifocal lens  
 2.8mm - 12mm

960P  
HD



**AX330**  
 IR Bullet Camera  
 Fixed lens  
 3.6mm



**AX230**  
 IR Dome Camera  
 Fixed Lens  
 3.6mm



**AX500**  
 IR Dome Camera  
 Varifocal lens  
 2.8mm - 12mm



**TRUE Balanced**  
 Day and Night



**EXMOR IMX HD**  
 new 3.75um CMOS



**DUAL DNR 2D+3D**  
 Noise reduction Video Engine



Day view



Magtec day time vivid color

Excellent color reproduction to achieve vivid and sharp pictures in day time view.

Night view



Magtec night vision WITH Dual DNR

Pixel noise during low light is effectively removed. Recorded video at night will be sharp and clear.

Night view



Other brand night vision WITHOUT Dual DNR

Pixel noise during low light will distort recorded video. Important evidence details will be lost.

Magtec AX series camera is using latest CMOS imaging technology that offer 2.0 FULL HD or 1.3 HD Megapixel resolution. Higher resolution allow you to zoom in bigger without distortion. Clearer picture reveal many useful details that can help solve the crime.

AX series camera can use back existing RG59 coaxial cabling to help you save cost when upgrading from old camera to new AHD camera.

## Features highlight:

SONY EXMOR IMX megapixel CMOS sensor is using latest 3.75um pixel high sensitivity technology to achieve high quality picture even at low light condition.



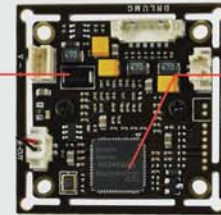
Long life 14 mil extra bright Infrared LED.



Thermally optimized IR board to provide sufficient heat dissipation and prolong camera life time.

Build in IR cut filter mini motorized lens to achieve best daytime color while still achieve high contrast night view. This is a TRUE day/night camera.

Built in surge protection up to 5KV to prevent camera easily damaged by minor lightning surge induced into video signal line during outdoor installation



Dual DNR video engine automatically analyze picture in 2D and 3D perspective to eliminate pixel noise during low light situation.

PCB trace routing is carefully designed to minimized noise interference and achieve highest video sharpness achievable by CMOS sensor.

## Accessories



NVS1230P4C  
4 ch  
power supply



NVS1250P8C  
8 ch  
power supply



NVS1215A  
Regulated 12 VDC,  
1.5A Adapter



RG59 CABLE  
Netway RG59  
Coaxial Cable

## Specification

| Model          | AX233                        | AX333                        | AX230                        | AX330                        | AX500                                   | AX600                                   |
|----------------|------------------------------|------------------------------|------------------------------|------------------------------|---|---|
| Sensor         | IMX322                       | IMX322                       | IMX235                       | IMX235                       | IMX235                                  | IMX235                                  |
| Resolution     | 2.0 MP                       | 2.0 MP                       | 1.3 MP                       | 1.3 MP                       | 1.3 MP                                  | 1.3 MP                                  |
| Number of LED  | 24                           | 36                           | 24                           | 36                           | 36                                      | 42                                      |
| Night View     | 20m                          | 30m                          | 20m                          | 25m                          | 25m                                     | 30m                                     |
| Lens Furnished | Board Lens<br>f 3.6mm / F2.0 | Board Lens<br>f 3.6mm / F2.0 | Board Lens<br>f 3.6mm / F2.0 | Board Lens<br>f 3.6mm / F2.0 | Vari focal Lens<br>f 2.8-12mm /<br>F1.4 | Vari focal Lens<br>f 2.8-12mm /<br>F1.4 |
| Environment    | Indoor                       | Outdoor                      | Indoor                       | Outdoor                      | Indoor                                  | Outdoor                                 |